

McKEON FireFighter™

"The First Responder"

An innovative line of fabric fire and smoke rated curtains
from McKeon Door Company.



Creative Solutions • Innovative Designs • Proven Products

McKeon FireFighter™ D100 Draft Curtain.

The D100 is manufactured from fabric that has been tested and certified for a 3-hour fire label and a smoke and draft rating; approved to span unlimited widths and heights up to 24 feet. The test criteria included side guides, however, the design parameters for draft curtains do not require side guides or any of the above certifications except to resist the passage of smoke. Thus, the McKeon D100 exceeds the fire and life safety requirements for draft curtains in the building code.



A draft curtain is commonly used in large spaces where smoke management is a challenge such as this application of the FireFighter D100 at Dulles International Airport in Washington, DC. Because of successful US Standards testing, McKeon Door Company can offer an uncommon solution by providing unlimited widths from any drop height.

In this type of application draft curtains typically work in conjunction with smoke and heat vents. These vent systems are not the same as active smoke evacuation systems, rather they are designed to minimize smoke movement and provide temporary tenable environments until building occupants can evacuate during a fire or emergency. Draft curtains are a critical part of the smoke control effort because they prevent the migration of smoke and help to channel it towards vents that are a passive system for smoke management.

McKeon FireFighter™

Open spaces surrounding atriums are possible with “The First Responder.”



CMC Levine Cancer Center, Charlotte, North Carolina

McKeon FireFighter™ D200 Opening Protective.

The D200 is an opening protective made of a flexible fire-rated fabric that is US laboratory tested and approved for unlimited widths. A first in the industry, the D200 carries a UL 10B and UL 10C rating for 20 minutes, UL 10D for 3 hours and UL 1784 for smoke and draft. FireFighter D200 is approved for use in multiple applications – whenever the 20-minute UL 10B or UL 10C rating is required for a fire door or shutter used to provide protection for an opening of any size in a rated wall.



The newly remodeled Lamar Fleming Building at the University of Houston sports a FireFighter. Seventeen feet wide and ten feet tall, the D200 is hidden from view in a shallow head space until activated by a smoke detector. Narrow side guides disguised within the surrounding walls provide the vertical path of travel as the FireFighter – the first responder in this elevator lobby – does its job.



In this boarding school in Pennsylvania the FireFighter Model D200 resolved two challenging fire and life safety code compliance issues. First, corridors in Group R occupancies must provide a minimum 1/2-hour rated protective environment for building occupant egress when the structure goes into alarm. Secondly, the FireFighter is allowing two floors vertical common space, open to the corridor, under non-fire conditions. Without compromising design, the “First Responder” is there!

McKeon FireFighter™ D200E Opening Protective with Egress.

The D200E offers a patent-pending and burn-tested egress feature that complies with exiting requirements of the building codes. The FireFighter D200E is the only protective curtain assembly on the market with a 20-minute UL 10B and 10C rating, 3-hour UL 10D rating, UL 1784 smoke and draft rating and integral conforming swing egress door(s). “The First Responder” is truly a first – going beyond where others leave off!



In the event of a building emergency the current model codes require specific elevator cars to act as a component of the means of egress system during building evacuation and fire personnel activities. The D200E can function as a two-way egress assembly and is ADA compliant. It can be placed at the point of access to the elevator car or provide access in and out of an elevator lobby. After passing through the patent pending and listed fabric swinging egress door, it closes automatically returning to its fire and life safety position.



McKeon FireFighter™

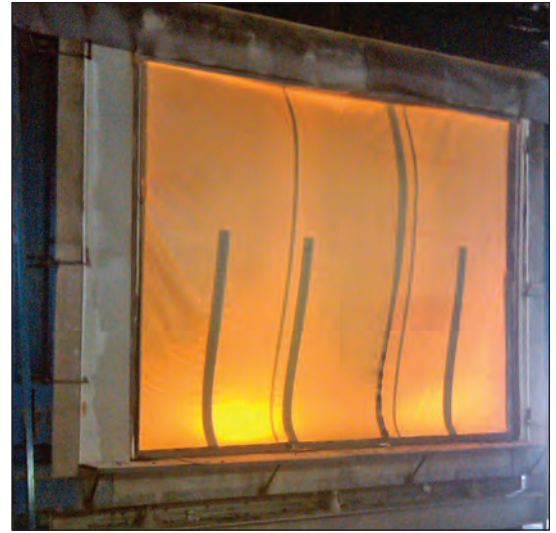
“The First Responder” – tested in the US to US standards and codes.

	D100	D200	D200E
Type	Draft Curtain	Opening Protective	Opening Protective
Fire Ratings	Approved materials in compliance with IBC Section 910.3.5.1	20-minute UL 10B 20-minute UL 10C 3-hour UL 10D	20-minute UL 10B 20-minute UL 10C 3-hour UL 10D
Smoke Ratings	Approved materials in compliance with IBC Section 910.3.5.1	Smoke & Draft UL 1784	Smoke & Draft UL 1784
Egress	N/A	N/A	Yes ²
Pressure Guides	Not Required	Required	Required
Self-Closing / Auto-Set®	Yes	Yes	Yes
Maximum Curtain Width	Unlimited ¹	Unlimited ¹	60 feet
Maximum Curtain Height	24 feet	24 feet	24 feet

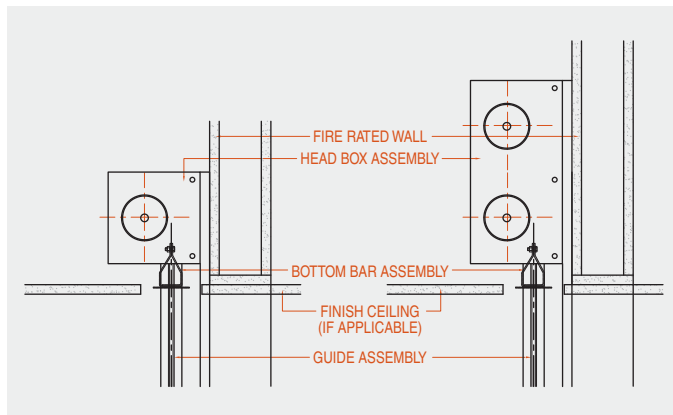
¹Multiple roller assemblies as required

²Multiple egress doors available within one assembly, maximum of 8

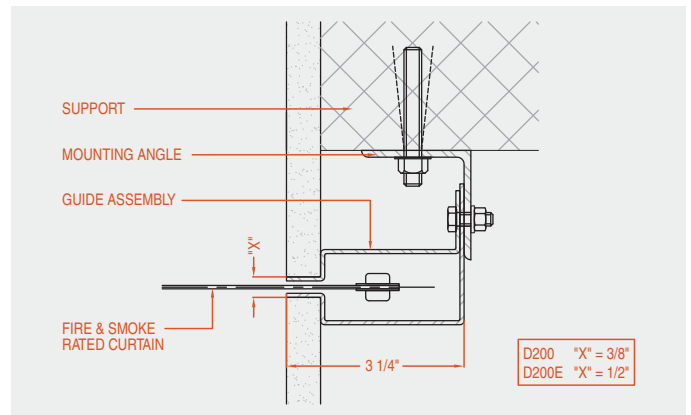
The listings above represent assemblies that were physically burn tested, listed and labeled in certified testing laboratories in the US. These are NOT engineering evaluations.



This is the actual test specimen that was subjected to the positive pressure test criteria as indicated by the outward bulge of the curtain assembly. In an unprecedented report the McKeon FireFighter has been listed and labeled UL 10D for unlimited widths for 3 hours, with and without egress; 20 minutes UL 10B & UL10C; and Smoke & Draft “S” labeled UL 1784.



The FireFighter head box is available with one barrel or multiple barrels to accommodate unlimited widths.



The McKeon side guide configuration, with a maximum of a half-inch reveal, can be surface or flush mounted making it virtually invisible in any application.



Creative Solutions • Innovative Designs • Proven Products

McKeon Door Company • 44 Sawgrass Drive, Bellport, NY 11713 USA • PH: 800-266-9392 • info@mckeondoor.com

© 2015 McKeon Rolling Steel Door Co., Inc.

Multiple Patents Pending